

Given® Diagnostic System



The Platform for PillCam™ Endoscopy

PillCam™ Endoscopy Procedure



Ingesting the PillCam™ Video Capsule

A simple fast is required prior to the procedure. PillCam capsule endoscopy begins when the patient ingests the video capsule with a glass of water.



Undergoing the Procedure

Images are acquired as the PillCam™ Video Capsule passes through the digestive system. Information is transmitted via an array of sensors secured to the patient to a DataRecorder worn around the patient's waist.

	PillCam ESO	PillCam SB
Patient Examination Time	20 minutes	8 hours
DataRecorder Version	DR2 Only	All Versions



Viewing the Results

The patient returns the DataRecorder for video processing on the RAPID® workstation. The physician reviews the video wherever convenient and generates a clinical report with images that can be printed, sent to referring physicians, or electronically stored.

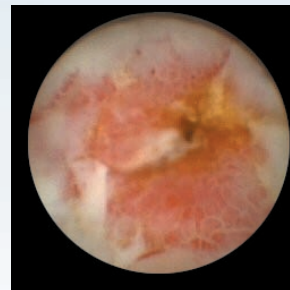
Images from Cases



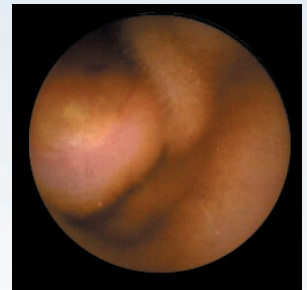
PillCam™ SB



Active bleeding



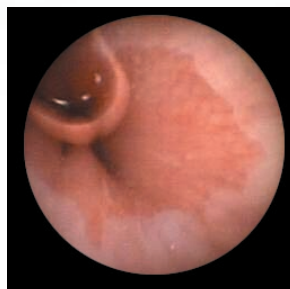
Crohn's disease



SB Tumor



PillCam™ ESO



Normal Z-line



Esophagitis



Suspected Barrett's

RAPID[®] 3 Software Platform

Advanced Tools for Diagnostic Proficiency

The new RAPID 3 application software introduces a new screen layout with intuitive controls designed to make diagnostic review efficient and easy to use.



Small Bowel Imaging

Small Bowel Imaging Enhancements:

- Tissue Color Bar simplifies locating anatomical landmarks
- QuadView mode improves reading efficiency
- Advanced reporting with My GI Dictionary
- QuickView provides pre-scanning overview of case

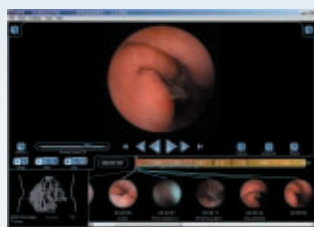


Esophageal Imaging

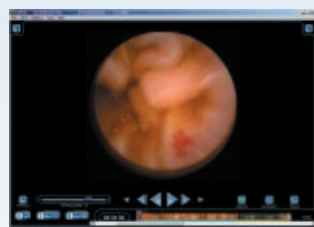
Esophageal Capabilities:

- PillCam ESO captures forward and retrograde images
- Individual or simultaneous display of both videos
- Displays esophageal transit time

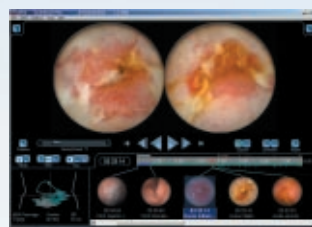
RAPID 3 Viewing Options for Small Bowel Imaging



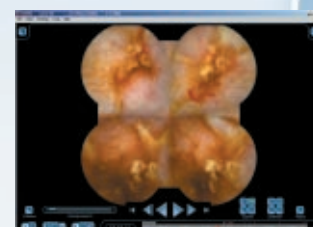
Single image view



Maximized view



Dual Image view



QuadView

DataRecorder 2

- High reliability, all solid state with no moving parts
- Improved patient comfort with integrated & lightweight battery
- Long-life, self-contained “smart” battery
- Required for PillCam[™] ESO imaging
- Charging base supports DR 1.5 Li-ion battery



DR 2



DR 2 in charger base



DR 1.5 Li-ion battery in charger base

Expanding GDS Platform Capabilities

RAPID Software Capabilities	2001 RAPID 1.3	2002 RAPID 1.4	2003 RAPID 2	2004 RAPID 3
PillCam™ SB capability	X	X	X	X
Variable viewing speed	X	X	X	X
Saving thumbnail images	X	X	X	X
Localization model		X	X	X
Suspected Blood Indicator (SBI)			X	X
Image zoom capability			X	X
Standard reporting			X	X
HIPAA privacy: de-identification of images			X	X
Images multi-view			X	X
PillCam™ ESO capability				X
Updated easy-to-use user interface				X
Full-screen video display				X
Improved Localization				X
Tissue Color Bar				X
HIPAA security, CFR 21 part 11				X
Password support for multiple users				X
Advanced Reporting with My GI Dictionary				X
Thumbnail markings with circles/arrows				X



DataRecorder Capabilities	2001 DR1	2003 DR1.5	2004 DR2
PillCam™ SB support	X	X	X
High capacity storage (> 8 hours recording)	X	X	X
Data protection from inadvertent deletion	X	X	X
Capsule activity LED indicator	X	X	X
Auto boot-up on battery connection	X	X	X
Removable credit card size hard disk		X	
4-slot Booster for multi-download		X	
Fast USB2-based short-duration download		X	X
PillCam™ ESO (twin-head HFR) support			X
High reliability solid-state memory			X
Built-in removable lightweight high-capacity Li-Ion battery			X
Simultaneous video download and battery charging			X
Auto-diagnostics and status indicators			X
DataRecorder status LED indicator			X
Audio alert			X
Easy connect /lock/remove SensorArray connection			X
Low heat output			X
Battery charge level and low-level LED indicator			X
Smart data-recorder battery management			X



System components

Part Number	Product
40256	DataRecorder 2 Kit
ASM-0112-01	SensorArray SB
ASM-0128-01	Sensor Array ESO
20451	PillCam SB
FGS-0088	PillCam ESO

* PillCam™ SB was previously marketed as M2A™



Expanding the scope of GI

Corporate Headquarters

Tel: +972-4-909-7777
Fax: +972-4-993-5360
info@givenimaging.com

North American Headquarters

Tel: +1-770-662-0870
Fax: +1-770-662-0510
infousa@givenimaging.com

European Headquarters

Tel: +49-40-513-3000
Fax: +49-40-460-69611
infode@givenimaging.com

France

Tel: +33-1-34-93-8000
Fax: +33-1-34-93-8011
infofr@givenimaging.com

Spain

Tel: +34-91-358-9289
Fax: +34-91-358-9592

Japan

Tel: +81-3- 5789-5842/3
Fax: +81-3- 5789-5845

Australia & New Zealand

Tel: +61-2-9889-3944
Fax: +61-2-9889-3955
infoaus@givenimaging.com

www.givenimaging.com

Copyright © 2001-2004 Given Imaging Ltd. All Rights Reserved. The GIVEN logo, GIVEN, PillCam, the PillCam logo, PILLCAM, ORDERWIN, RAPID are trademarks or registered trademarks of Given Imaging Ltd. All other trademarks belong to their respective owners.

GMB-0005-02